

Houston & Homes

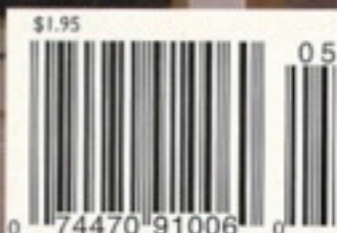
Lifestyles

www.houstonlifestyles.com MAY 2004

Shane Reynolds: A House of Smiles

TABLESCAPES 2004

GIFTS MOM WILL LOVE



J. PAMELA PHOTOGRAPHY & LAKEWOOD

Fort Bend & Homes

Lifestyles

www.fortbendlifestylesandhomes.com MAY 2004

Shane Reynolds: A House of Smiles

**GIFTS MOM
WILL LOVE**

**FURNITURE
FINDS**

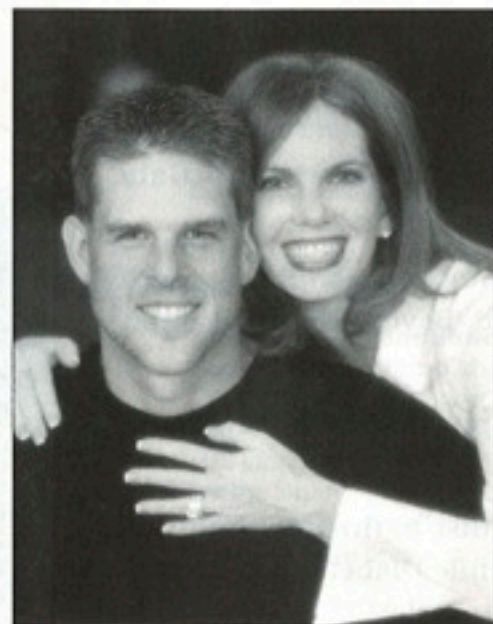


J. PAMELA PHOTOGRAPHY & LAKEWOOD

Story by Sam A. Houston
 Photography by J. Pamela and Lakewood
 Construction by Christopher Sims Custom Homes
 Building Design by Carmichael & Dame
 Interiors by John Kidd Associates
 Additional furnishings by Janet Gust, Twins Design
 Landscaping by F&G Landscaping & Tree



Classic pedimented front of Shane and Pam Reynolds's home with an unusual porte cochere commands some 250 feet of frontage on its two-acre lot. Behind six-car garage at left is a regulation-size basketball court. ♦ Limestone gazebo provides shade for swimmers in surrounding pool. Behind lush landscaping is a fairway at Sweetwater Country Club.



ENRIFER LUSKY PHOTOGRAPHY

Shane Reynolds: A House of Smiles

Short but glorious run
 for a baseball family's home

They didn't start out with grand scale in mind, but in 2002 when Astros pitching star Shane Reynolds and his wife, Pam, took possession of their new home, it was all of that. The residence was a smooth fit to accommodate their immediate family, their children's pals and a lot of good friends. On a typical weekend the crowd would be strung out from one end of the

house to the other. That string stretched 250 feet and covered nearly 27,000 square feet under roof on three floors, nearly 23,000 square feet, air conditioned. The property in exclusive Sweetwater estates, at slightly more than two acres, was about the right size for one of the largest houses in Sugar Land.

"We wanted a house we didn't have to leave," Pam says today. "We wanted to

make a home where our children's friends could come and play, and they did. Ryan's basketball team practices on the basketball court, and his baseball team practices in the batting cages. I liked that; it gave me an opportunity to see the children my kids hang out with."

Recalling the years of farm leagues and low salaries before Shane hit the majors, she said, "You make a lot of friends when



This view, 132 feet in length, of the gallery, opens onto pool and garden at left. Lanterns designed by John Kidd Associates. Floor in Versailles pattern, French quarried Beaumaniere limestone. Arches and groin ceilings are in skim-coated plaster and faux finishing by Jay Iraussi. At far end is a Louis XIII chest from Brian Stringer with a painted trumeau mirror from Area.



Rich African mahogany contrasts with treasures of the sports world in Shane's study. On far wall is Austin artist Opie Ottersted's painting of Shane at work, numerous trophies and photos of various celebrities. Mounds of baseballs, basketballs, footballs, golf balls, hockey pucks and boxing gloves are all signed by their famous users.



Hearth is hand-carved limestone designed by John Kidd Associates in style of French Renaissance. Painted and glazed boxed beam ceiling. Custom designed draperies in raw silk from Arena Fabrics. Ladderback chair from Pollock in Clarence House linen. Antique balustrade lamp with hand-painted shade from Watkins Culver Gardner. Lounge chair in Ultra-Suede from National. Stark custom wool carpet.

you're living with other people, which we did because we didn't own a house until we came to Houston in 1994 and bought a place in Greatwood the next year. We also had really good friends on the team. They'd come by and we'd barbecue and the kids would run wild and it was like an even bigger family. Every minute was fun.

"Now, Shane is playing in Arizona and this isn't home anymore. Home will be in Paradise Valley, so we're moving. He just left a few weeks ago. I'm here because the children are still in school." Phoenix is home of the Diamondbacks, his new team.

Some suggest that houses retain the spirit of their former owners. If there's anything to that, the next owner will be lucky, Pam believes. "This is a house built out of a lot of love. It is a house built for my family and we've enjoyed it and had a great



Classic limestone columns frame living room entrance with monumental hand-carved limestone hearth. Above it, an 18th century polychromed wood mirror. Wall stencil by artist Rusty Arena. On wall at left is 19th century Venetian leather screen. Silk drapery by Dintiman with custom trim by Mariner-Pacific. Spanish armchairs are circa 1860. Bench in foreground by Caché in Nomi hand-silk screened velvet.

This is the first monthly magazine to feature the residence; we thought our readers would like to see what's behind the front door of a sports superstar's home before the family packs up for Arizona.

time in it. Whoever gets it is going to get a house that was full of complete love."

Life happens

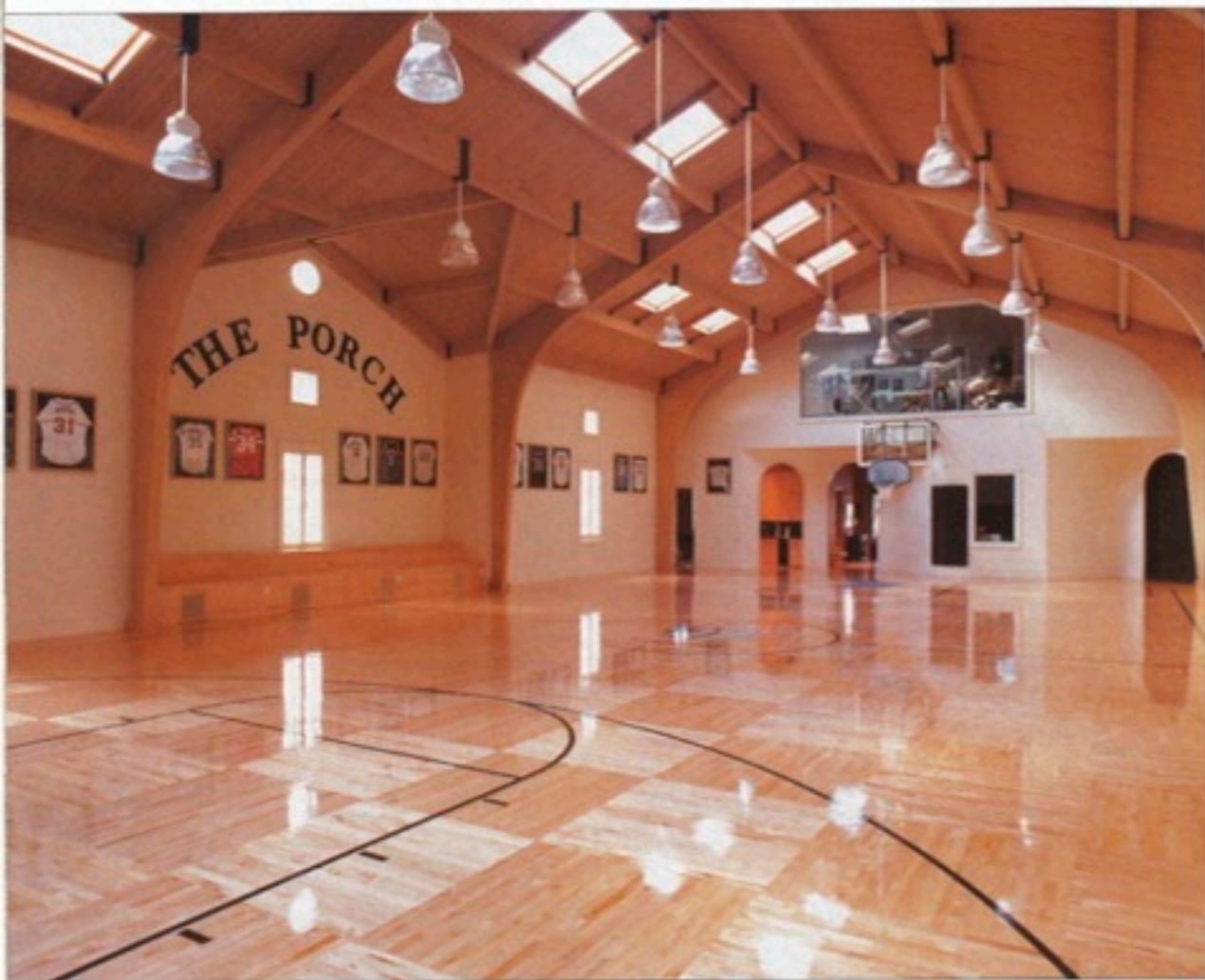
"Our plans didn't start out this way," she observes quietly as we sit in the family room, baronial in its scale and character. A magnificent, Renaissance styled fireplace, the likes of which could have warmed the nobility in a chateau on the River Loire before the French Revolution, is under a boxed beam ceiling that perfectly reflects the luxury laid out below.

Every surface, including plaster walls and quarried French limestone floors, is finished as sumptuously as the rich velvet, linen, wool and leather furnishings. This room is the family's favorite gathering place, just off the kitchen and breakfast areas. The level of detail here and everywhere else, both inside and out, is jaw-dropping.

Although Shane headed west for spring training a few days before this interview, his Hummer H2 is parked outside the

front door under the porte cochere. Quicker to reach than the six-car garage, the H2 is her daily driver. Since it's a weekday, the children are at school. The *Lifestyles & Homes* photo crew packs up to depart after the photo shoot and we settle down to talk. This is the first monthly magazine to feature the residence; we thought our readers would like to see what's behind the front door of a sports superstar's home before the family packs up for Arizona.

The regulation-sized basketball court with its glistening, urethane-finished maple floor accounts for nearly 4,300 square feet.



"Before we started on this place," says Pam, "we spent a lot of time talking about what we would really like to build. Shane wanted a kind of rustic house like up in the Hill Country, but I loved European, a look that was very open with lots of doors, windows and light, in a design that was timeless and wouldn't go out of style. I won."

"We always wanted more land and so we got this property, then didn't do anything for three years because we wanted to make sure Shane's career was going to continue in Houston. We didn't want to build a house, then go play for another team, but due to decisions we still don't understand, Shane wasn't allowed to stay with the team he had grown to love in all his years there. It was completely unexpected."

Miracle Grow

But in the late '90s the future looked solid, so they met with building designer Robert Dame, whose work dots high-end areas all around these parts. "We told



Polished maple-floored regulation basketball court in Reynolds house is lined in dozens of jerseys signed by famous professional sports figures. "The Porch" denotes the small bleacher section. Behind window above basket is a large workout room. Below is gym kitchen, lounge, shower and dressing rooms. ♦ Kitchen's iron inset ceiling is custom designed, iron fireback over stove is French, circa 1885 from Archetype. Shades hand-woven by Conrad. Petal bar stools from Wicker Works. Cabinet glazing by Mike Adalis. Wall finish by Iraussi Studio, back-splash is tumbled marble and glazed ceramics from Walker Zanger with bronze liner. Counter tops in uba tuba granite, cabinets are job-built in birch. The boxer, looking for a snack, is Sadie. ♦ (right) Landing on second floor, overlooking living room, is floored in wide-plank, hand-chiseled walnut by Custom Floors Unlimited. Polychromed stenciling and ceiling by Rusty Arena. Painted Minton Spidell reproduction secretary. Hand-wrought iron rail with aged bronze cap, custom designed, made by Iraussi Studios. Antique Portuguese armchairs with cane backs.



Robert what we wanted," she recalls, "and he designed us a beautiful house, 8,000 square feet, just what we asked him to do. Then, we got into what we really wanted and it went up to 10,000. The next set of plans got it to 16,000. Then, Shane wanted a gym so he could play basketball with his friends and it just got bigger than we thought it would. But it turned out fine." It surely did.

The regulation-sized basketball court with its glistening, urethane-finished maple floor accounts for nearly 4,500 square feet. That doesn't include a large, fully equipped workout room on a floor above, which is visible through a huge glass window. Lining the court's walls is Shane's collection of game jerseys, formerly worn by dozens of major sports figures, including his own, number 37.

Builder Christopher Sims, no stranger to constructing very large houses with indoor sports courts, looked to be at his best form in this extraordinary creation. "It was a great project," he says, "the type we love to build. Great clients, a gorgeous lot, classic architecture. It took the collaboration of many talented folks to deliver the home Pam and Shane wanted. The house was all Pam's but the gym and workout loft were all Shane's."

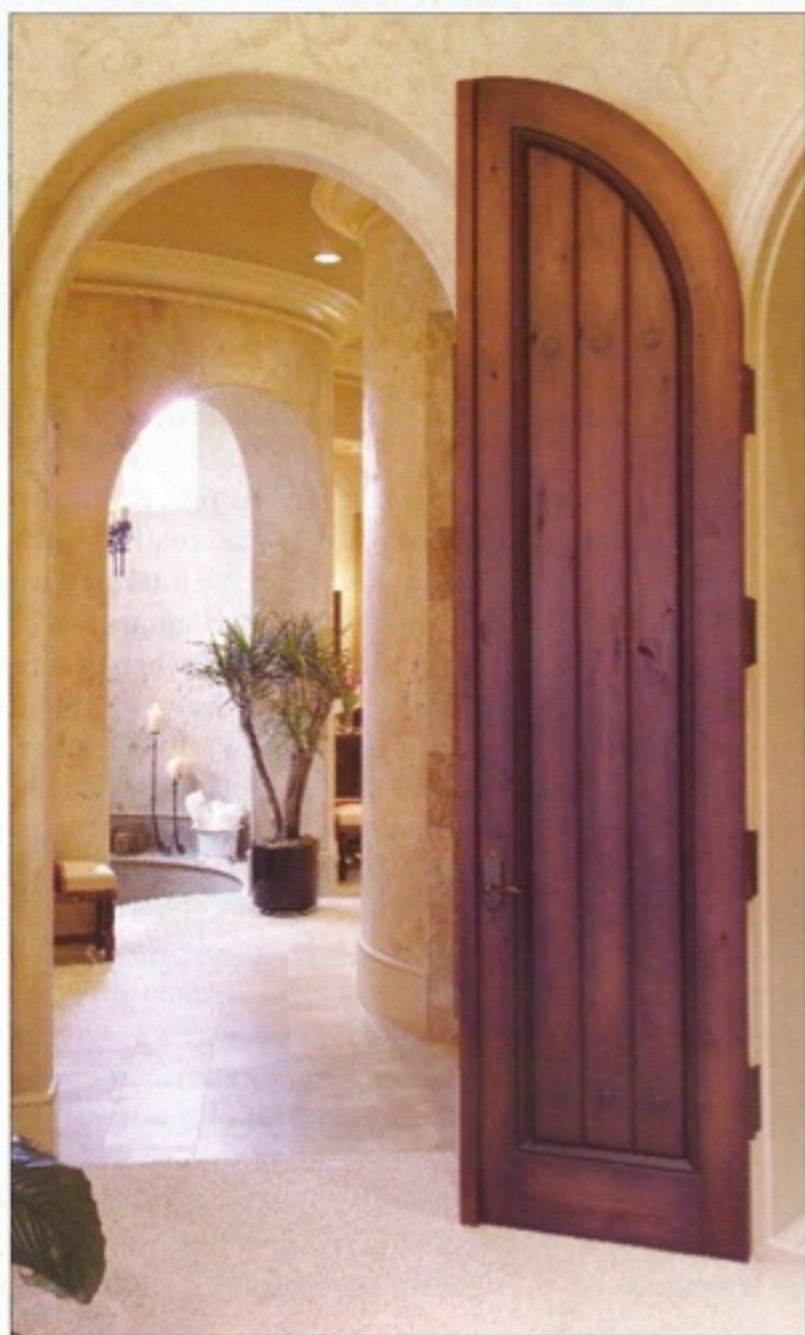
She agrees, and heaps praise on Richard Harris, Sims's foreman. "Richard," she says, "was a driving force in making this house so magnificent. He made sure the finest wood, the foundation, everything—was built soundly." Within the walls thousands of feet of wires, cables and myriad other devices, including multiple security systems, make everything run efficiently.

Interior designer John Kidd turned his formidable talent to creating finishes for every square foot of the interior. Two examples: several thousand square feet of floors on ground level are in French Beaumaniere limestone. A powder room is in embossed yellow and burnished silver leather.

Kidd selected most of the furnishings, some found in travels to New York antique shops with the Reynoldses. Janet Gust of Twins Design also provided additional furniture, accessories and finishing touches.

Heroic proportions

Next to Sweetwater Country Club and through a gated entry, the house spreads broadly at the end of the street. Its pedimented bay centers the symmetrical, main façade of the all-brick structure, in front of which is a monumental, classically columned porte cochere. Arched windows



march evenly across the first floor. Through massive, wooden double doors circular stone stairs sweep from the lobby to the second floor. The dining room opens to one side off both the lobby and gallery. Straight ahead, the living room is guarded by classic, limestone Roman columns and dominated by a monumentally scaled, carved limestone hearth. Two stories overhead the polychromed ceiling glows with the work of Houston artist Rusty Arena.

A transverse gallery forms the spine of the house, running alongside the garden façade. An untrammelled view from one end to the other—132 feet—is no less impressive than those in the great manor houses of England and Europe.

Off to the right and down the gallery is Shane's study, a veritable museum of sports artifacts, everything housed in dark mahogany. Beyond it and an elevator lies the master suite, which would require more pictures than are in this article to adequately depict.

Along the windowed gallery toward the opposite end, past the dining room, the butler's bar and pantry, Pam enjoys a kitchen that seems to possess every device known for cooking or catering gourmet meals for the large contingents she has regularly hosted. A large open space includes the breakfast room and next to it is the previously noted family room. Past one of three staircases and the children's playroom are various service rooms, a planning center and sports bath facilities, including the basketball court and garages.

On master bedroom's ceiling, a bronze coved finish, with walls by Jay Iraussi. Silk drapery from Noblis. Portuguese style bed by LaRossi with Coverlet fabric by Glant. Chairs from Cameron Collection in Clarence House fabric. All trim is custom made by Mariner-Pacific. Table between chairs from Brian Stringer. Painting over fireplace, Spanish, 1819, slides to side, revealing television. ♦ Between his and her vanities in separate rooms and through a massive, wooden door is the master bath's circular, sunken tub. Faux finish walls by larussi Studios. All-mosaic circular tub by Olympus Marble. Hanging fixture 19th century French in iron.



Funtime

Games R Us aptly describes the almost fantasy-like second floor playground of electronic games and pool table, plus a bar, a state-of-the-art theater, a trophy room, a second children's playroom and other spaces. A pair of guest rooms had theme designs that begged to be photographed. However, we settled for 9-year-old Lauren's dreamlike two-story bedroom suite with its own staircase spiraling up to a balcony play loft.

Not pictured is Ryan's digs. For a baseball buff, the 6-year-old's bedroom would generate earth-shaking envy. Balustrades supporting the stair rail to his own play area, plus those along the area's balcony, are tightly-placed baseball bats signed by the world's leading hitters. Shane collected the bats, Sims says, at an All-Star game. Ryan, it goes without saying, is taking these with him.

The third floor is largely for storage, but there's more than enough space if the next owner needs to add a few more bedrooms. →



Daughter's bedroom is draped in silk by Creation Baumann with hand-tied silk ribbon and silk velvet appliqued leaves. Custom-made Swiss linens. Bench is country French, circa 1880 from Watkins Culver Gardner in Larsen silk velvet. Iron bed and painted headboard from Portugal. Railing designed by John Kidd Associates. ♦ Daughter's bathroom, feminine in hand-tinted parchment wallcovering with silk hand-tied ribbon by Cannon & Bulloch. Crema marfil marble counters on vanity.



Young Ryan's bedroom is a young boy's dream with this upper level play space. Both the railing up the stairs and the balcony's banisters are composed of big league baseball bats signed by world famous players and collected by Ryan's father for his son during an All-Star game.

Balustrades supporting the stair rail to his own play area, plus those along the area's balcony, are tightly-placed baseball bats signed by the world's leading hitters.

Off the covered, rear porches, a swimming pool adjoins the terrace. The well-proportioned Greek temple with a domed, metal roof appears to be floating in the pool. Classical limestone columns supporting the temple roof spout fountains of water into the pool around its circumference. At Pam's behest, a symmetrical water slide was added for the children and their pals.

While the house takes up a great deal of the land, there's still plenty of room for more activities for the children, plus a roofed, outdoor kitchen off the family room. Beyond it, the guesthouse with its cavernous, two-story living room would make any weekend visitor stuck indoors more than a little envious.

Bon voyage

For two brief years the Reynoldses cherished their very own Camelot where the mighty and the mild came to play and savor a family's hospitality and friendship. But soon, they will be reunited and Arizona's gain will become Texas's loss. We wish these good neighbors, good friends, good citizens, all the best.

Sooner or later someone will acquire the property and hopefully they can recapture the joy that abounded here with such uncompromising generosity and good spirit. Deborah and Bill Treadway of Treadway Realty Group (281-639-4444) is of the opinion this will be one large property that won't remain among their listings very long. "There are qualities about the Reynolds's house that are so appealing to potential homeowners who look for houses like this, I think it will be irresistible," he says. "We've already had inquiries from qualified buyers. Whoever is lucky enough to become the second owner is going to knock a home run, bases loaded." ●

J. Pamela Photography Inc.
 17300 Saturn Lane Suite 108 Houston, TX 77058 • 281-480-1444 • www.jpamela.com

PORTRAITS OF NOTE



Miss Spencer